

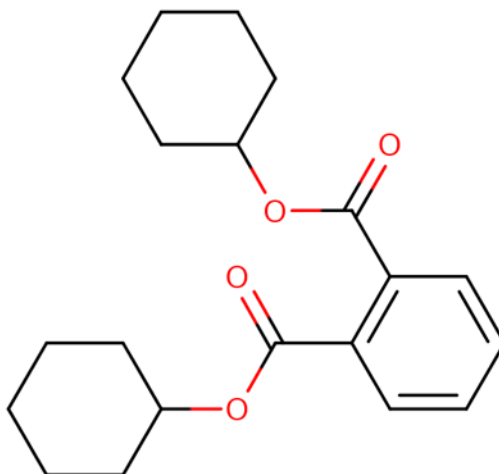


Risk Evaluation for Dicyclohexyl Phthalate (DCHP)

Supplemental Information File:

Supplemental Information on Consumer Exposure Modeling Results in the Consumer and Indoor Dust Exposure Assessment

CASRN 84-61-7



December 2025

The following files are not available in [Regulations.gov](https://www.regulations.gov). In order to access any of these files, please contact the EPA Docket Center, Public Reading Room to view or receive a copy of one or more of these files. Requests for copies can be made as follows:

In Person/Writing: Environmental Protection Agency, Docket Center, 1301 Constitution Ave NW, Room 3334, Washington, D.C. 20004. The Docket Center's hours of operations are 8:30 a.m. – 4:30 p.m., Monday – Friday (except Federal holidays). Telephone: 202-566-1744 Email: Docket-CustomerService@epa.gov.